



MILES ESTATE AGENTS

90 Burge Crescent Cotford St. Luke  
Taunton TA4 1PD £250,000





**\*\*PRICE IMPROVEMENT\*\***A well presented 3 bedroom modern terraced house with good size living room and kitchen/breakfast room in this ever popular village 5 miles North West of Taunton, close to the wonderful Quantock Hills. Master bedroom with walk in closet, enclosed garden, garage and off road parking - early viewing highly recommended. Freehold Council Tax Band C EPC : C.







## Features:

- Entrance hall
- Good size sitting room
- Kitchen/breakfast room
- Cloakroom
- Master bedroom with walk in closet
- 2 further bedrooms
- Family bathroom
- Enclosed garden
- Single garage & off road parking
- Freehold
- EPC : C
- Council Tax Band C





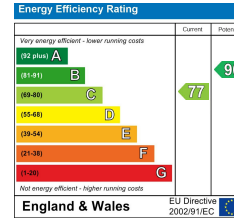
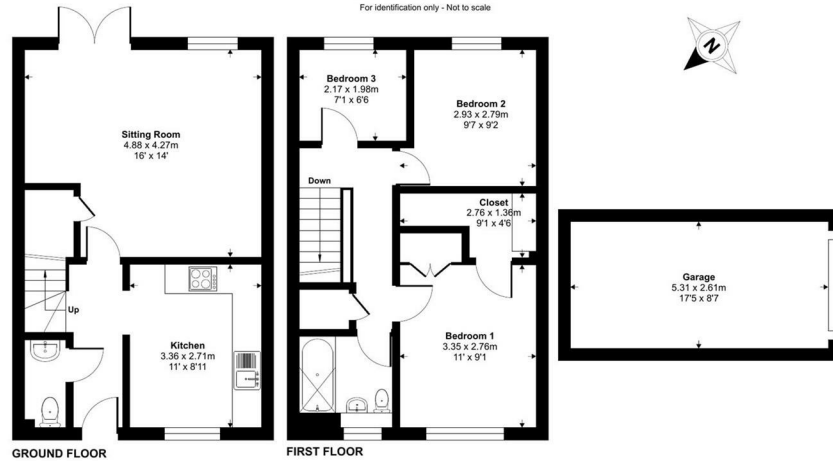
# Burge Crescent, Cottford St. Luke, Taunton, TA4

Approximate Area = 818 sq ft / 75.9 sq m

Garage = 149 sq ft / 13.8 sq m

Total = 967 sq ft / 89.7 sq m

For identification only - Not to scale



Floor plan produced in accordance with NICE Property Measurement 2nd Edition, incorporating International Property Measurement Standards (IPMS Residential). © richcom 2025. Produced for Miles Alexander Limited T/A Miles Estate Agents. REF: 1250167



Viewings strictly through the selling agents:

**Miles Estate Agents**

2 Piffin Lane, Bishops Lydeard, Taunton, Somerset, TA4 3AS

**Tel: 01823 470 500**

[lydeard@milesestateagents.co.uk](mailto:lydeard@milesestateagents.co.uk)

[www.milesestateagents.co.uk](http://www.milesestateagents.co.uk)

**rightmove**

**OnTheMarket.com**

**MILES ESTATE AGENTS**

**BEST**  
ESTATE AGENT GUIDE  
2019 : EXCEPTIONAL  
SALES